

**Hans Hofmann: On Paper**  
 February 20 - March 28, 2020



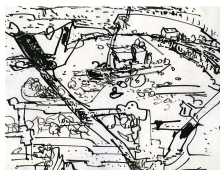
**HANS HOFMANN [1880-1966]**

*Untitled*  
 c. 1935  
 India ink on paper  
 8.5 x 11 inches  
 (BP#HH-8425)  
 Estate no. M-0933-234



**HANS HOFMANN [1880-1966]**

*Studio*  
 1940  
 Mixed media on paper  
 14 x 11 inches  
 Signed "HH" lower right  
 (BP#HH-8410)  
 Estate no. M-0517/01



**HANS HOFMANN [1880-1966]**

*Untitled*  
 c. 1935  
 India ink on paper  
 8.5 x 11 inches  
 (BP#HH-8419)  
 Estate no. M-0933/1214



**HANS HOFMANN [1880-1966]**

*Untitled*  
 c. 1935  
 India ink on paper  
 8.5 x 11 inches  
 (BP#HH-8423)  
 Estate no. M-0933-1471



**HANS HOFMANN [1880-1966]**

*Untitled*  
 c. 1935  
 India ink on paper  
 8.5 x 11 inches  
 (BP#HH-8421)  
 Estate no. M-0933/1271



**HANS HOFMANN [1880-1966]**

*Untitled*  
c. 1935  
India ink on paper  
8.5 x 11 inches  
(BP#HH-8415)  
Estate no. M-0933/614



**HANS HOFMANN [1880-1966]**

*Untitled*  
1943  
Watercolor on paper  
17.75 x 23.875 inches  
(BP#HH-8409)  
Estate no. M-0668/04



**HANS HOFMANN [1880-1966]**

*Untitled*  
c. 1935  
India ink on paper  
8.5 x 11 inches  
(BP#HH-8422)  
Estate no. M-0933/1439



**HANS HOFMANN [1880-1966]**

*Untitled*  
c. 1935  
India ink on paper  
8.5 x 11 inches  
(BP#HH-8416)  
Estate no. M-0933/919



**HANS HOFMANN [1880-1966]**

*Untitled*  
1944  
Mixed media on paper  
11 x 14 inches  
Signed "Hans Hofmann" lower left  
(BP#HH-8405)  
Estate no. M-1379/11



**HANS HOFMANN [1880-1966]**

*Untitled (Hofmann School and House on The Hill, Miler Hill)*  
c. 1935  
Ink on paper  
8.5 x 11 inches  
(BP#HH-8420)  
Estate no. M-0933/1265



**HANS HOFMANN [1880-1966]**

*Untitled*

1943

Ink and watercolor on paper

17.75 x 24 inches

Initialed and dated, lower right: HH XI

5 43

(BP#HH-8408)

Estate no. M-0667/15



**HANS HOFMANN [1880-1966]**

*Untitled*

c. 1935

India ink on paper

8.5 x 11 inches

(BP#HH-8418)

Estate no. M-0933/1213



**HANS HOFMANN [1880-1966]**

*Untitled (Lopes Square, Provincetown)*

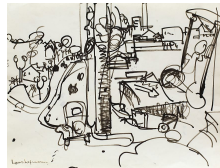
c. 1935

India ink on paper

8.5 x 11 inches

(BP#HH-8424)

Estate no. M-0933-1559



**HANS HOFMANN [1880-1966]**

*Untitled*

c. 1935

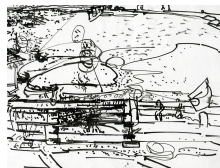
India ink on paper

8.5 x 11 inches

Signed "Hans Hofmann" lower left

(BP#HH-8413)

Estate no. M-0933/1148



**HANS HOFMANN [1880-1966]**

*Untitled*

c. 1935

India ink on paper

8.5 x 11 inches

(BP#HH-8417)

Estate no. M-0933/1118



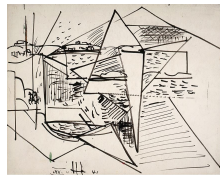
**HANS HOFMANN [1880-1966]**  
*Untitled*  
 1943  
 Watercolor on paper  
 17.75 x 24 inches  
 (BP#HH-8407)  
 Estate no. M-0669/14



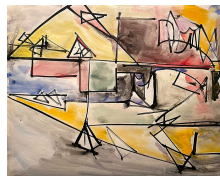
**HANS HOFMANN [1880-1966]**  
*Untitled*  
 1943  
 Ink on paper  
 14 x 17 inches  
 Signed "HH 43" lower right  
 (BP#HH-8412)  
 Estate no. M-0597/01



**HANS HOFMANN [1880-1966]**  
*Untitled*  
 c. 1935  
 India ink on paper  
 8.5 x 11 inches  
 (BP#HH-8414)  
 Estate no. M-0933-1182



**HANS HOFMANN [1880-1966]**  
*Untitled*  
 1941  
 India ink on paper  
 11 x 14 inches  
 Signed "HH 41" lower center  
 (BP#HH-8411)  
 Estate no. M-0517/02



**HANS HOFMANN [1880-1966]**  
*Untitled*  
 c. 1942  
 Ink and gouache on paper  
 19 x 24 inches  
 (BP#HH-8406)  
 Estate no. C-0279